

# Modus

---

Centro progetti Tecno  
.72

# Modus



## INTRO

The Modus chair was first created in 1972 by Tecno's own Design Centre, in order to provide the Graphis office system with a chair with multiple functions.

The aim of the Modus project was to obtain not only the creation of one chair, but a whole series of chairs, created by the intelligent combination of various components to form different solutions for different types of environment.

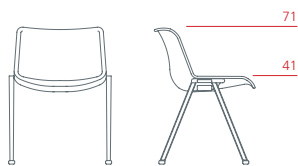
The basic element of these multiple solutions is a polished polyamide (nylon) body in black and white. There are two basic variants: MODUS, stackable chairs that can be attached to an individual trestle base in polished, die-cast aluminium, and optionally equipped with padded upholstery and armrests; and MODUS 5, swivel chairs on a 5-spoke base in polished die-cast aluminium and optionally equipped with padded upholstery, armrests, height adjustment, feet or castors. The padded fabric upholstery comes in a wide range of finishes and can even be customised.

## DESIGNER



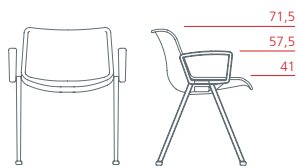
Centro Progetti Tecno

# Modus



Stackable chair

**1MD5511:** L 53 D 53 H 71  
**1MD5513:** L 53 D 53 H 71 (with upholstery for seat)  
**1MD5512:** L 53 D 53 H 71 (with upholstery for seat/back)



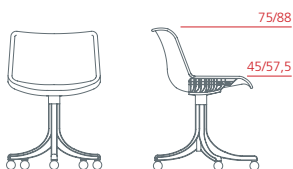
Chair with armrests

**1MD5521:** L 61 D 53 H 71,5  
**1MD5523:** L 61 D 53 H 71,5 (with upholstery for seat)  
**1MD5522:** L 61 D 53 H 71,5 (with upholstery for seat/back)



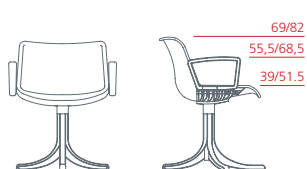
Swivel chair, adjustable height on feet

**1MD5531:** L 48 D 51 H 69/82  
**1MD5533:** L 48 D 51 H 69/82 (with upholstery for seat)  
**1MD5532:** L 48 D 51 H 69/82 (with upholstery for seat/back)



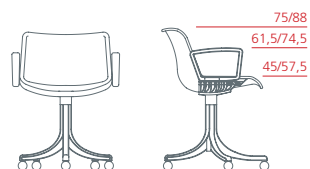
Swivel chair, adjustable height, on castors

**1MD5611:** L 48 D 51 H 75/88  
**1MD5613:** L 48 D 51 H 75/88 (with upholstery for seat)  
**1MD5612:** L 48 D 51 H 75/88 (with upholstery for seat/back)



Swivel chair, adjustable height, with armrests on feet

**1MD5621:** L 56 D 51 H 69/82  
**1MD5623:** L 56 D 51 H 69/82 (with upholstery for seat)  
**1MD5622:** L 56 D 51 H 69/82 (with upholstery for seat/back)



Swivel chair, adjustable height, with armrests on castors

**1MD5631:** L 56 D 51 H 75/88  
**1MD5633:** L 56 D 51 H 75/88 (with upholstery for seat)  
**1MD5632:** L 56 D 51 H 75/88 (with upholstery for seat/back)

# Modus

## SHELL

---



WHITE GLOSS POLYAMIDE



BLACK GLOSS POLYAMIDE

## UPHOLSTERY

---

See the following fabrics list

FABRICS

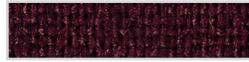
# Fabrics 1/4

## EK (Category 00)

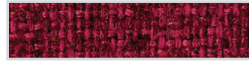
---



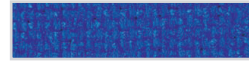
MARS RED



DARK RED



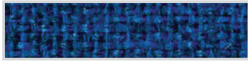
RED - BLACK



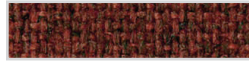
CLASSIC BLUE



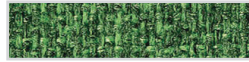
METAL BLUE



BLUE - BLACK



BROWN - BLACK



GREY - GREEN



LIGHT GREY



DARK GREY



BLACK

## TC (Category 01)

---

CUSTOM

CUSTOMER OWN FABRIC

## LANI (Category 02)

---



LIGHT GREY



DARK GREY



BLACK



BROWN



OCHRE



MUSTARD



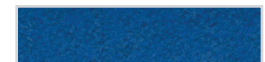
ORANGE



LIGHT RED



DARK RED



LIGHT BLUE



DARK BLUE



POWDER BLUE

# Fabrics 2/4

## FIELD (Category 02)

---



BLACK - WHITE



GREEN GREY



BLACK



CHALK



SAND



YELLOW



RED



PURPLE



BLUE PURPLE



PETROLEUM BLUE



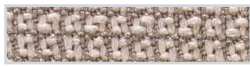
LIGHT GREEN



KIWI GREEN

## METRIC (Category 02)

---



GREEN GREY



SAND



BROWN



MAGENTA



RED



ORANGE



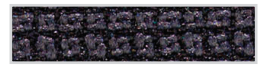
YELLOW



GREEN



OLIVE GREEN



BLACK - GREY



DARK GREY



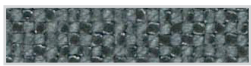
CLASSIC BLUE

## HOT (Category 02)

---



WHITE



DARK GREY



BLACK



CREME



SAND



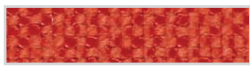
BROWN



YELLOW



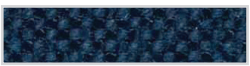
OGHRE YELLOW



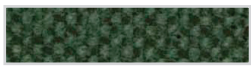
ORANGE



PURPLE



CLASSIC BLUE



OLIVE GREEN

# Fabrics 3/4

## REMIX (Category 02)

---



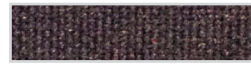
LIGHT GREY



GREY



SAND



BURGUNDY



COFFE



EARTH



ORANGE



BLUE SKY



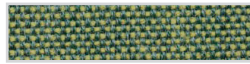
PETROLEUM BLUE



AQUAMARINE



LIGHT GREEN



GREEN

## STEELCUT TRIO (Category 03)

---



WHITE - BLACK



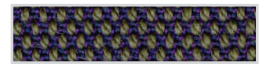
WHITE - GREY



WHITE - RED



BEIGE



BROWN - PURPLE



OCHRE YELLOW



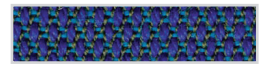
ORANGE



MAGENTA



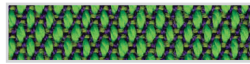
ICE



PURPLE - TURQUOIS



GREEN - WHITE



GREEN - PURPLE

## STEELCUT 2 (Category 03)

---



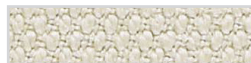
CREME



GREEN GREY



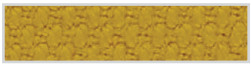
BLACK



KHAKI



BROWN



YELLOW



ORANGE



RED



AUBERGINE



CLASSIC BLUE



LAWN GREEN



OLIVE GREEN

# Fabrics 4/4

## DIVINA (Category 03)

---



CHALK



BLACK



SAND



YELLOW



ORANGE



RED



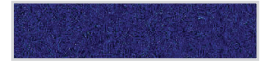
MAGENTA



PURPLE



ELETTRIC BLUE



CLASSIC BLUE



LIGHT GREEN



KIWI GREEN

## HALLINGDAL (Category 03)

---



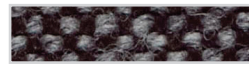
CREME



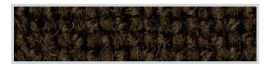
GREY



BLACK - GREY



BROWN - GREY



BROWN



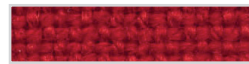
OCHRE YELLOW



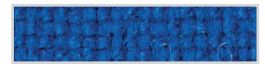
ORANGE



ORANGE - MARS



RED



ELETTRIC BLUE



PURPLE